



## Lethans Forest Complex

### CONCEPT

Lethans Forest Complex covers around 875 hectares, comprising forests belonging to 9 different landowners. They were planted between 1989 and 1990, mainly with Sitka Spruce, although other species are present in smaller quantities.

The forests are coming to an age where wind damage becomes an ever-increasing risk and harvesting is due to start. Consequently, a Long-Term Forest Plan (LTFP) is required to provide details of timely felling operations and plan for a robust, well-designed forest for the future.

The creation of a LTFP is a lengthy process and must follow the guidance and requirements set out by Scottish Forestry. The plan involves various checks and planning processes, including this public consultation. The process is being managed by Fountains Forestry on behalf of all the forest owners.

The replanting design is not yet finalised and will be informed by a number of factors, including:

- ❖ climatic suitability for tree species: “the right tree in the right place”
- ❖ this consultation exercise.

The restocking of the forest will include conifer species such as Norway Spruce, Sitka Spruce, and Scots Pine, located within the forest based on site suitability. All replanting designs must also incorporate areas of unplanted open ground and native broadleaf species, potentially including Oak, Aspen, Willow,

### BENEFITS OF COMMERCIAL FORESTRY

- ❖ Carbon positive – forestry reduces global CO<sub>2</sub> and, when timber is turned into a product, the CO<sub>2</sub> is ‘locked up’, otherwise it is biodegradable.
- ❖ Support the local and wider economy – through planting and establishment work, timber harvesting and haulage, as well as timber processing.
- ❖ Provide a long-term habitat – for a multitude of flora and fauna in both broadleaf and coniferous areas, each providing different benefits to the local ecology.

Blackthorn, Rowan, and Hazel, again dependent on site and climatic suitability.

### BACKGROUND

The Lethans Forest land is also associated with the Lethans Windfarm, which has now gained planning consent. We recognise that should the wind farm proposal continue to the construction phase, it will impact the forest and its future composition. However, we still need to form plans for the remaining forest pre- and post-construction and to prepare for the possibility that construction does not go ahead.

This consultation aims to gather as much information as possible to help inform the future design of the forest and to highlight any impacts due to harvesting of the existing forest. It is our intention to minimise and mitigate any impact on birdlife, archaeology, public access, infrastructure, landscape, etc, wherever we can.

## AIMS

The landowners' aims are to manage the woodland in an environmentally sensitive way; to produce good timber; and meet their investment objectives and those of the UK Forestry Standard. Fountains Forestry's core business is forest management, and we have a long history of establishing woodland and managing it through to felling and replanting across the UK. Throughout the new forest's life, we will employ local contractors where possible, supporting the local and wider economy as we progress through planting and maintenance work to timber harvesting, haulage, and processing.

The forest will also offer benefits to local ecology, creating a long-term habitat for various birds, animals and plant life in both broadleaf and coniferous areas, as well as helping to mitigate climate change through carbon sequestration in both growing and harvested timber.



## FOUNTAINS FORESTRY UK LTD

*A subsidiary of F&W Forestry Services, Inc.*

### CONTACT:

Craig Dinwoodie, Director

Email: [craig.dinwoodie@fountainsforestry.co.uk](mailto:craig.dinwoodie@fountainsforestry.co.uk)

Stirling Office Tel: 01786 406361

### GENERAL ENQUIRIES:

Email: [enquiries@fountainsforestry.co.uk](mailto:enquiries@fountainsforestry.co.uk)

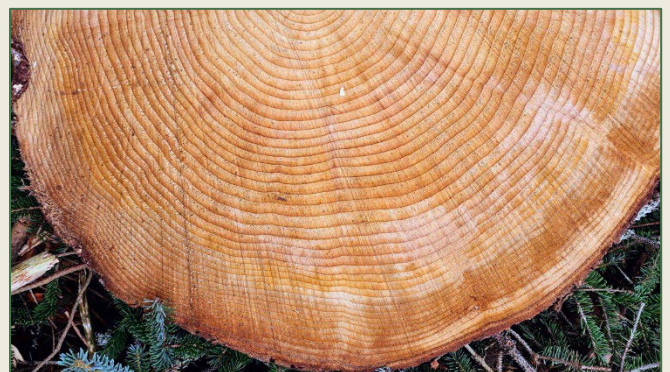
Web: [www.fountainsforestry.co.uk](http://www.fountainsforestry.co.uk)

[www.fwforestry.com](http://www.fwforestry.com)

Published September 2024



Use the QR link to access our feedback form and share your comments.





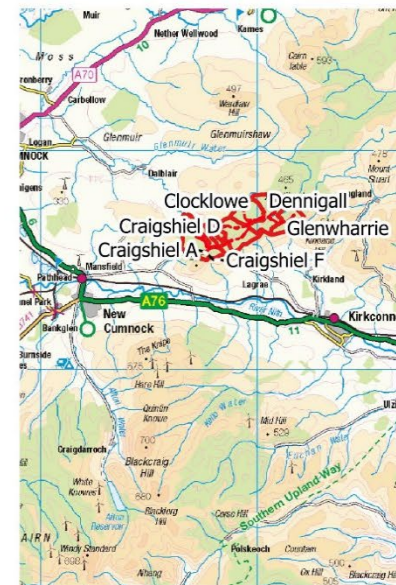
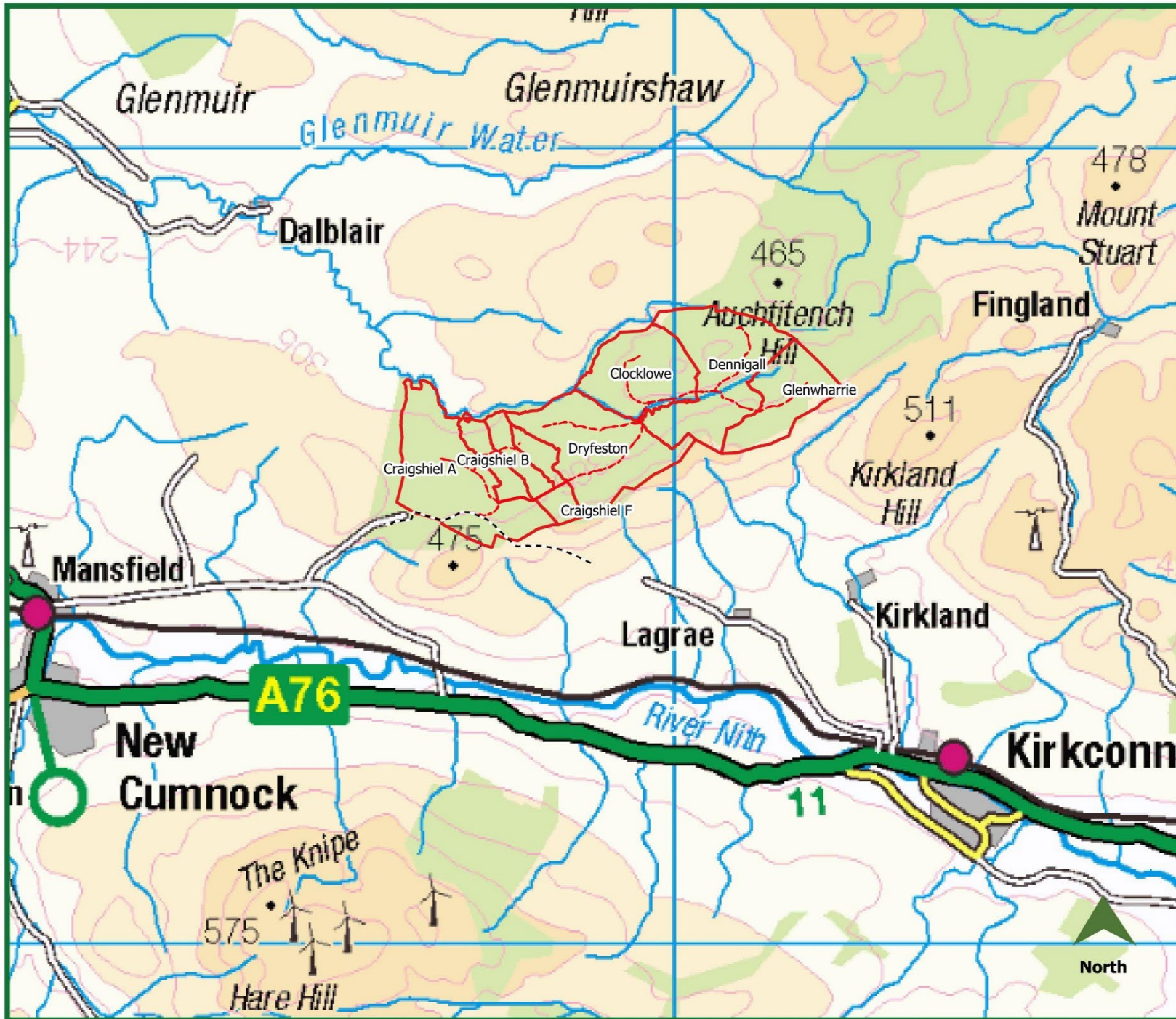
Springfield House  
Laurelhill Business Park  
Stirling  
FK7 9JQ

Lethans Complex

Location Map

Site Location: NS690163

 Lethans Complex Boundary



Date: September 2024

1:50,000  
METRES @ A3

0 500 1,000 m



Reproduced from Ordnance Survey  
digital map data © Crown Copyright 2024.  
All rights reserved Ordnance Survey Ltd: 100010059.

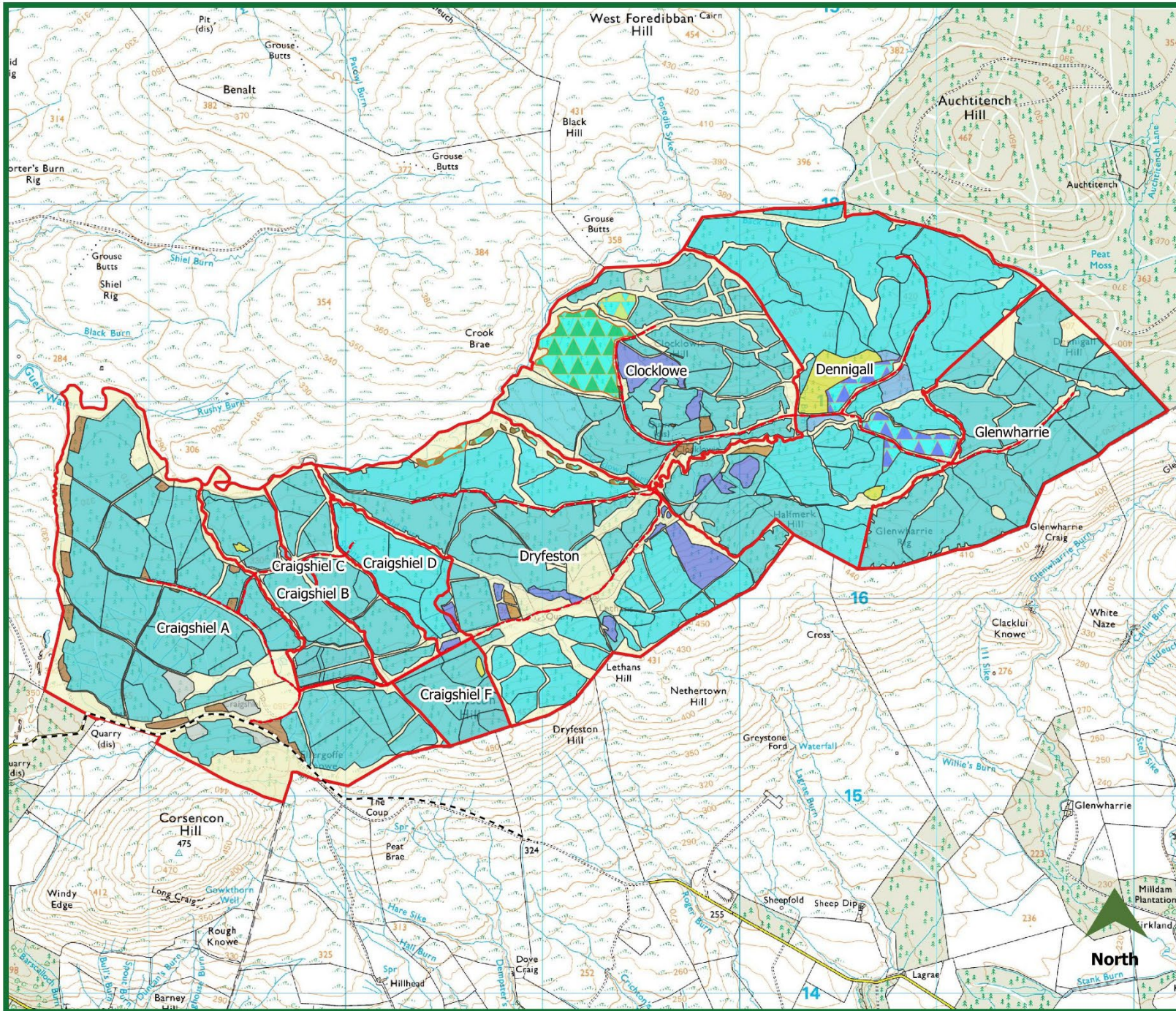


Springfield House  
Laurelhill Business Park  
Stirling  
FK7 9JQ

**Lethans Complex**

**Current Species Map**

**Site Location: NS690163**



Lethans Complex Boundary

Current Species

- BG
- ESS
- GF
- JL
- MBL
- NMB
- NS
- OG
- SS
- SS/ETSS
- SS/JL
- SS/LP
- SS/MBL/OG
- SS/NS
- UP
- 

Date: September 2024

1:20,000  
METRES @ A3



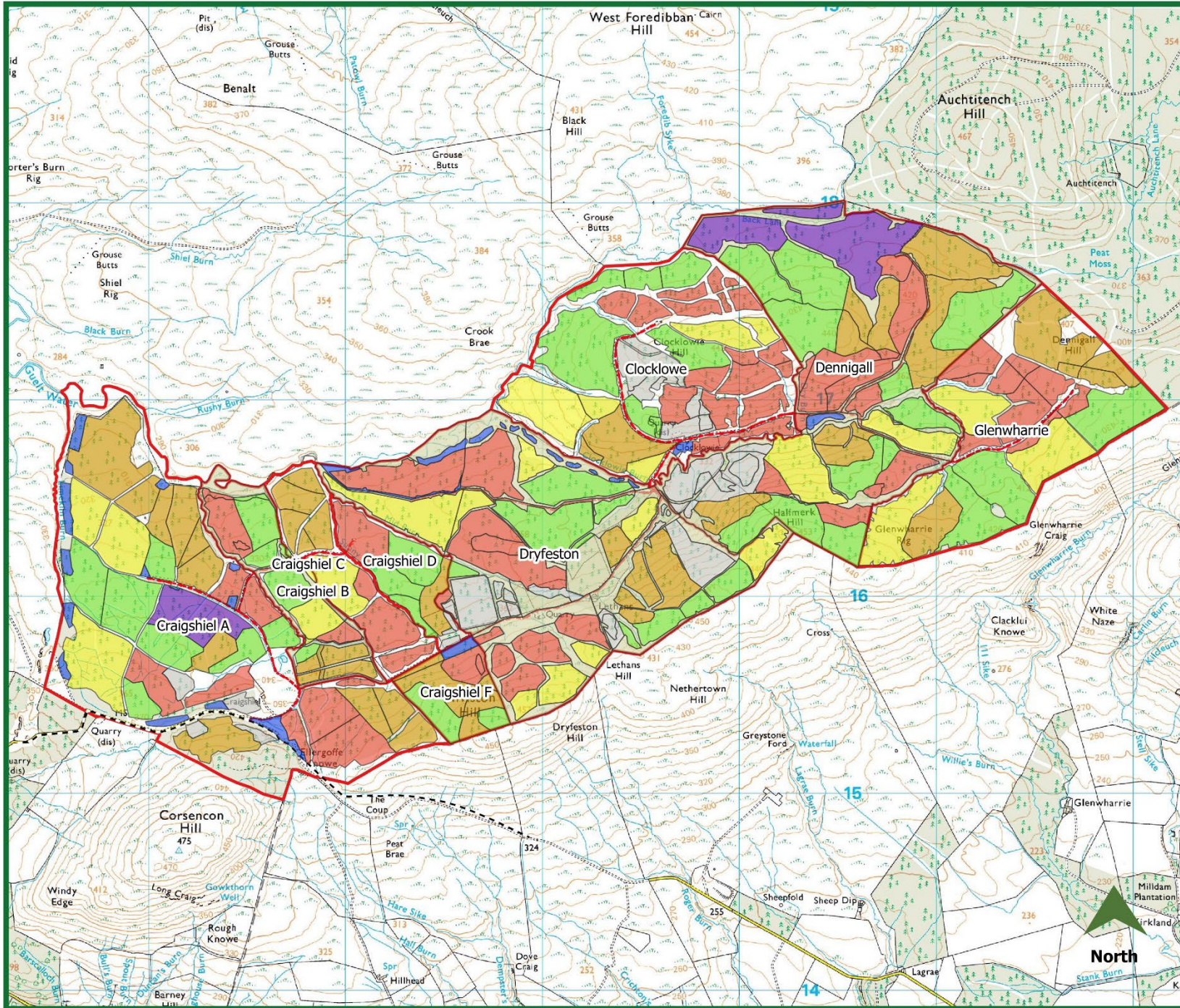


Springfield House  
Laurelhill Business Park  
Stirling  
FK7 9JQ

**Lethans Complex**

**Proposed Felling Phases Map**

**Site Location: NS690163**



- Lethans Complex Boundary
- Felling Phases May2021**
- 1
- 2
- 3
- 4
- 5
- LTR
- OG
- OOP

Date: September 2024



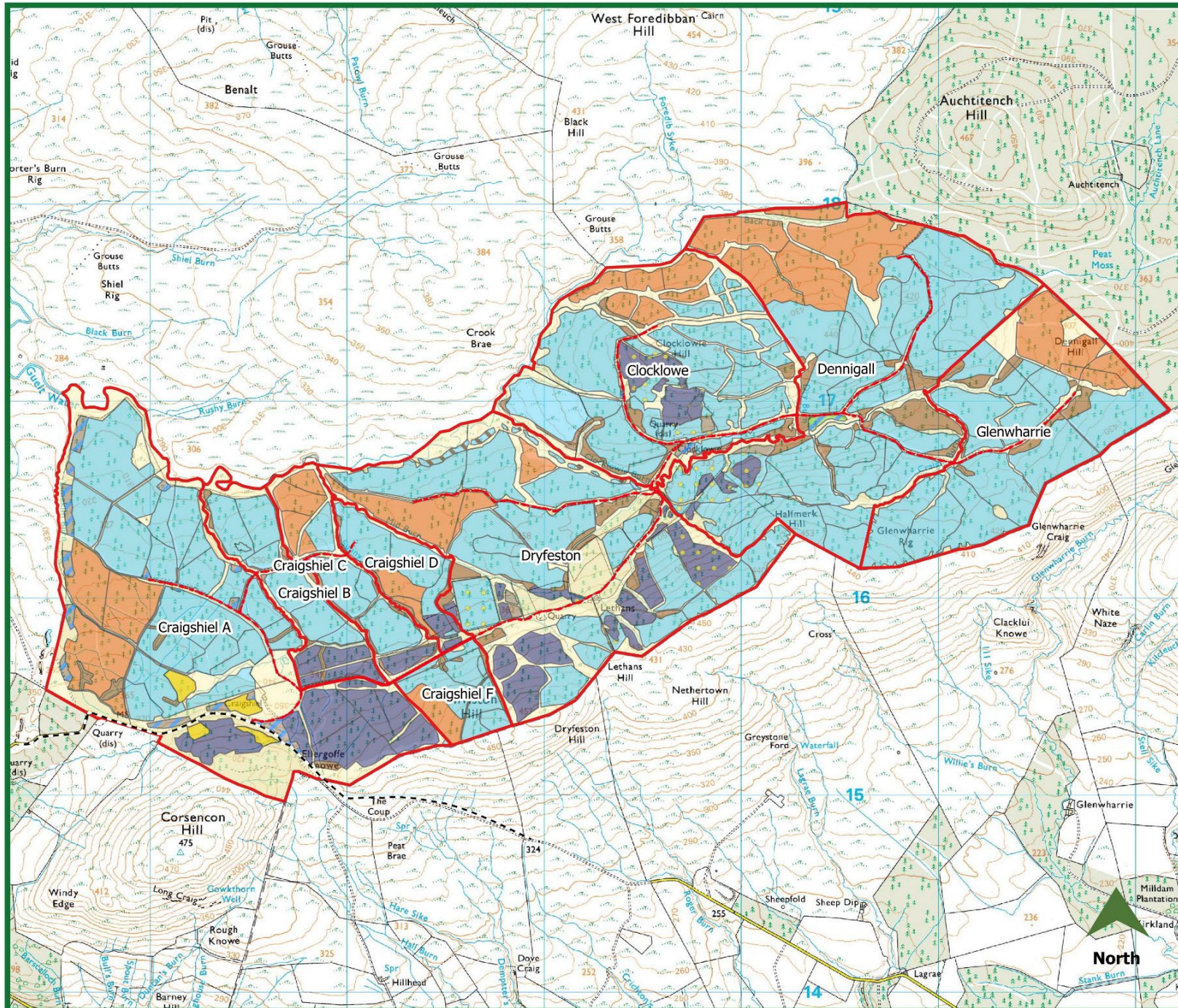


Springfield House  
Laurelhill Business Park  
Stirling  
FK7 9JQ

**Lethans Complex**

**Proposed Restock Map**

**Site Location: NS690163**



- Lethans Complex Boundary
- Lethans Merged Restock**
- LTR-NBL,LTR-MB
- NBL
- NS
- OG
- SP
- SS
- OPP-BL,OPP-MB
- OPP-NS
- OPP-SS
- LTR-GF
- LTR-MB-SS
- OPP
- 



Date: September 2024

1:20,000  
METRES @ A3

